




KROONRING

 English

Assemble the Kroonring quickly and easily in just **7 simple steps!**



Preparation: Step 1 and 2

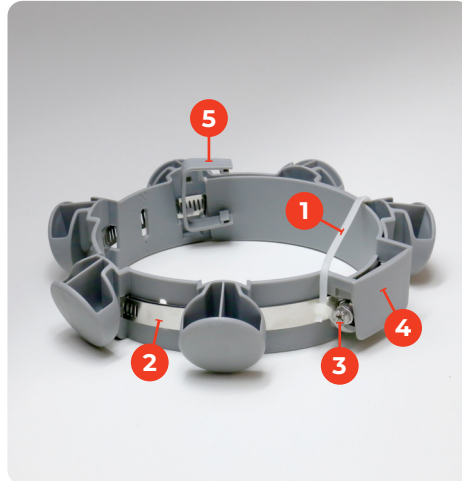
Positioning: Step 3, 4 and 5

Mounting: Step 6 and 7

Contents of the Kroonring

- 1 Tie wrap
- 2 Hose clamps
- 3 Hose clamp screw
- 4 Hose clamp housing
- 5 Cover-cap

Refer to the photo to identify the numbered parts.



Required tools

- 1. Socket wrench size 8
- or 2. Philips screwdriver
- and 3. Wire-cutter.



Caution

Step 1: The worm screw on the stainless steel tension strap must be tightened **by hand** (wrist torque) to prevent damage and loss of grip.

Step 2: The stainless steel tensioning strap can be tightened further by hand or using an automatic screwdriver with a slip clutch.



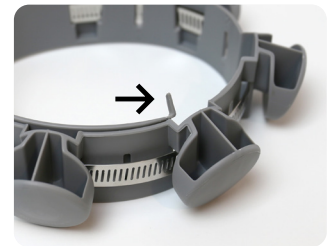
Step 1

Cut the tie wrap with the wire-cutter.



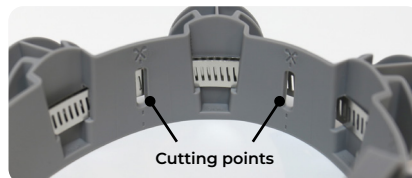
Step 2

Remove the cover (including the connecting tab). You will reinstall it in **step 7**.



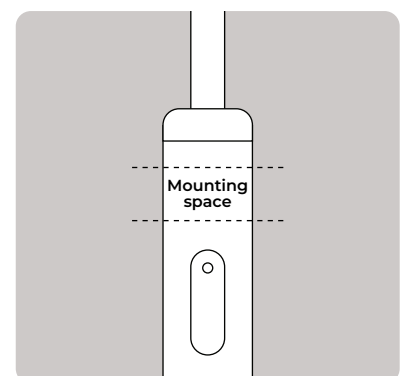
Step 3

Check whether the buttons need to be clipped using the following method: Fit the Kroonring around the pole, determine how many buttons protrude beyond the hose clamp housing and cut these at the indicated location. If not required, proceed directly to **step 5**.



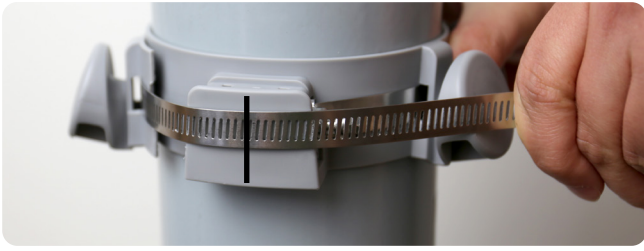
* Diameter indication and cutting lines:
See inside Kroonring.

* **Caution:** Do not mount the Kroonring over the inspection hatch.

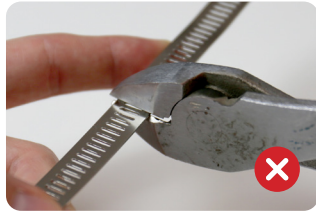
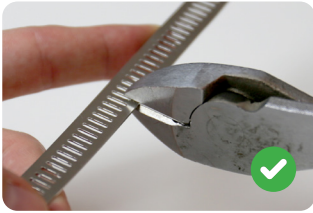


Step 4

Place the Kroonring tightly around the pole and cut the stainless steel hose clamp in the middle of the housing (at the **black marking**).

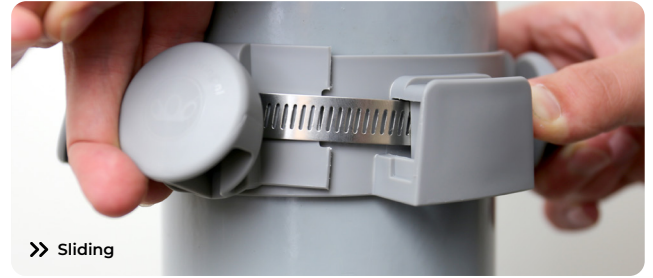


* **Advice:** Cut on both sides of the hose clamp as seen in the photo.



Step 5

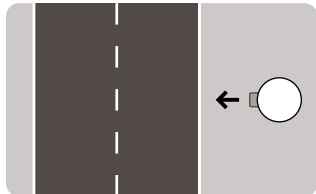
Place the Kroonring around the pole and insert the end of the hose clamp beneath the clamp screw.



You are now ready to install the **Kroonring**.

Step 6

Tighten the hose clamp screw securely with a Philips screwdriver or size 8 socket wrench.



* **Advice:** The hose clamp housing should face the street.

* Ensure that the lip does not protrude.



Step 7

Position the cover cap on the hose clamp housing.



* Attach the cover cap with the lips facing outward.



Final result

Well done!
Your Kroonring is now successfully assembled and ready for use.

The photo shows the final result.



Kroonring-advisor

Raymond van den Bos

Get in touch:
info@kroonring.nl

Visit our website:
www.kroonring.nl

